



W
WHITES

15 Three Cuppes Lane, Salisbury, SP1 1ER

£900 PCM

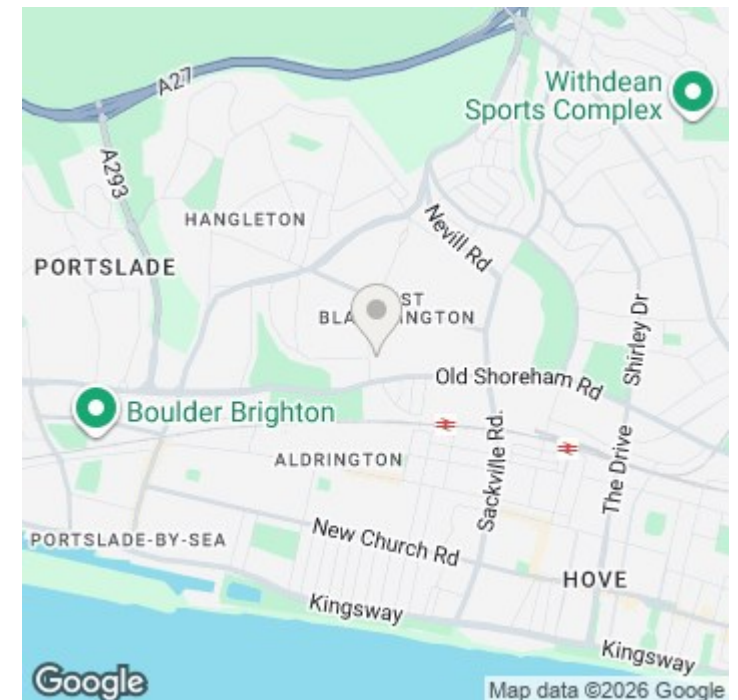
About The Property

Modern one-bedroom flat in the heart of Three Cuppes Lane, just a short walk from Guildhall Square. Featuring a spacious living area, modern kitchen and bathroom. Includes a designated parking.

- Central location
- Large double bedroom
- Spacious sitting room
- Modern fitted kitchen
- Shower over bath
- Designated parking space
- Well-presented throughout
- Convenient local amenities



sq ft



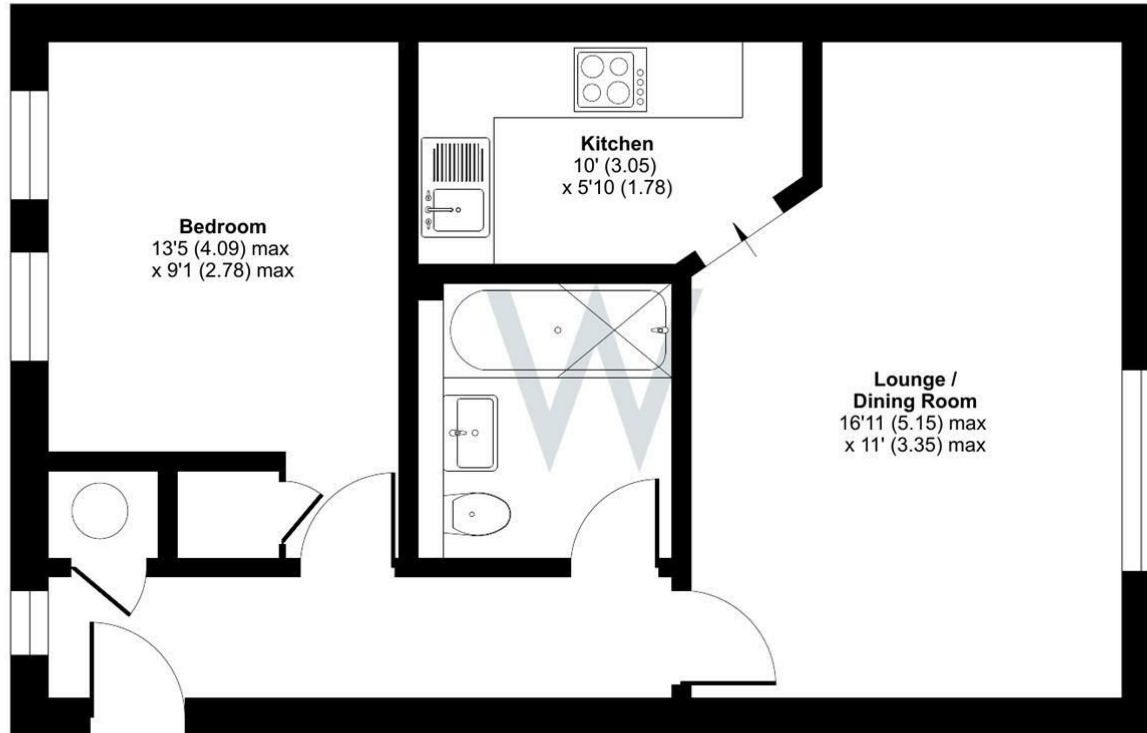




Three Cuppes Lane, Salisbury, SP1

Approximate Area = 476 sq ft / 44.2 sq m

For identification only - Not to scale



GROUND FLOOR



Floor plan produced in accordance with RICS Property Measurement Standards incorporating International Property Measurement Standards (IPMS2 Residential). © nchecon 2026. Produced for H W White Ltd. REF: 1467736



Further Information

Let available date: 20th June 2026
NB: This date is provisional and will only be confirmed once referencing has been successfully completed.

Property type: Flat - Ground Floor

Furnish type: Unfurnished

Deposit: £1,035

Local authority:

Council Tax: Band B

EPC: C(70)

Energy Efficiency Rating

	Current	Potential
Very energy efficient - lower running costs		
(92 plus) A		
(81-91) B		
(69-80) C	70	76
(55-68) D		
(39-54) E		
(21-38) F		
(1-20) G		
Not energy efficient - higher running costs		
England & Wales	EU Directive 2002/91/EC	